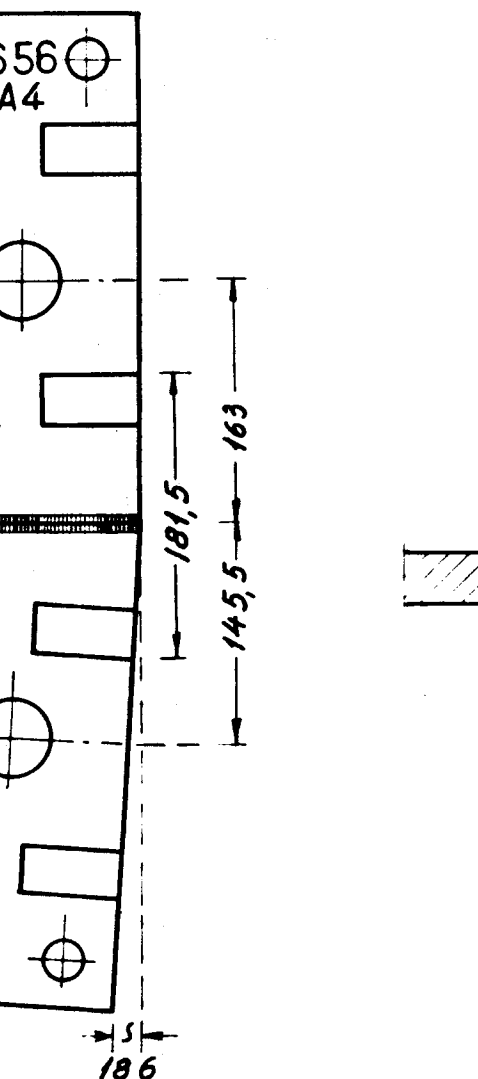
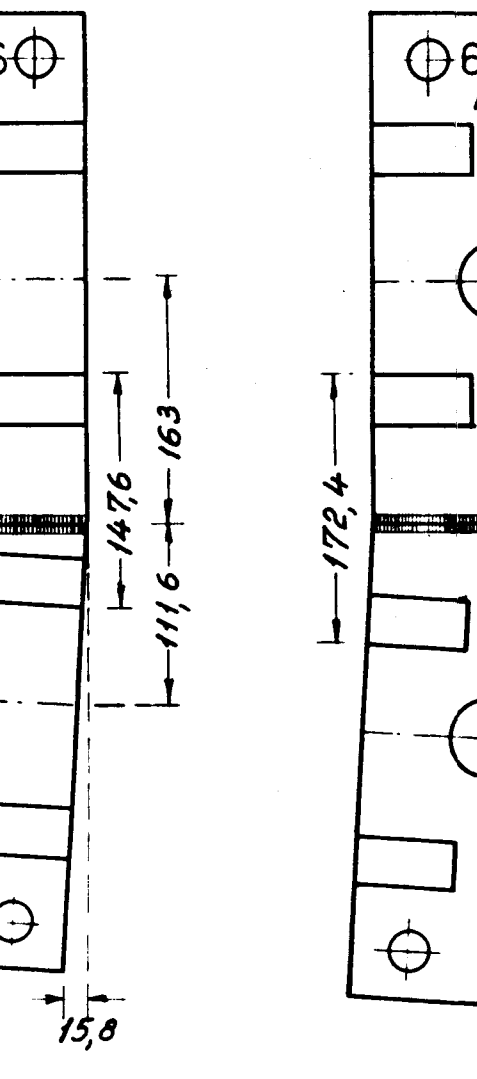
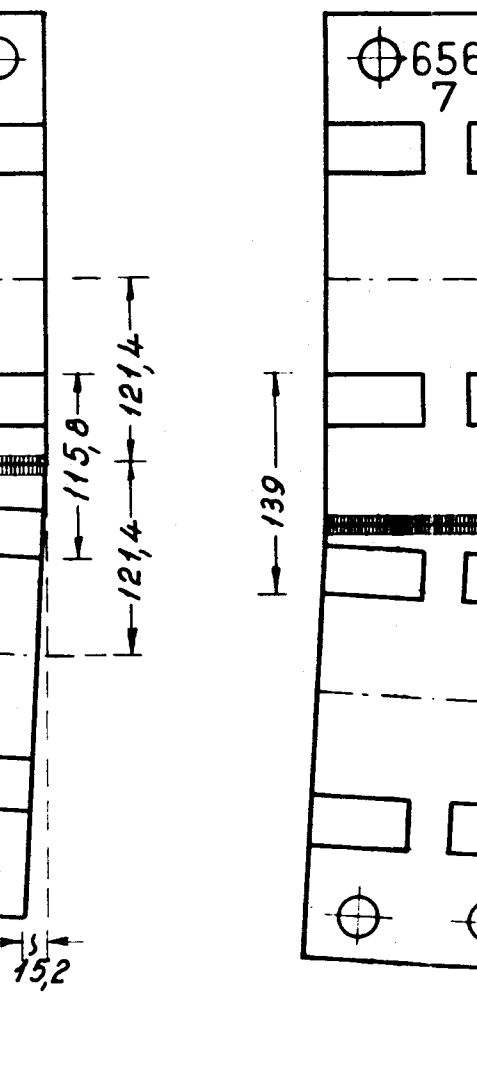
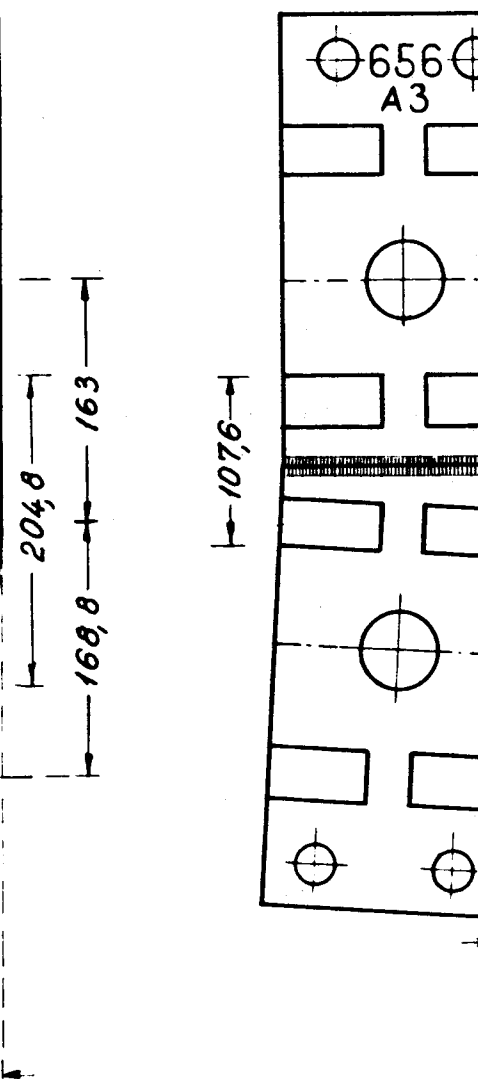
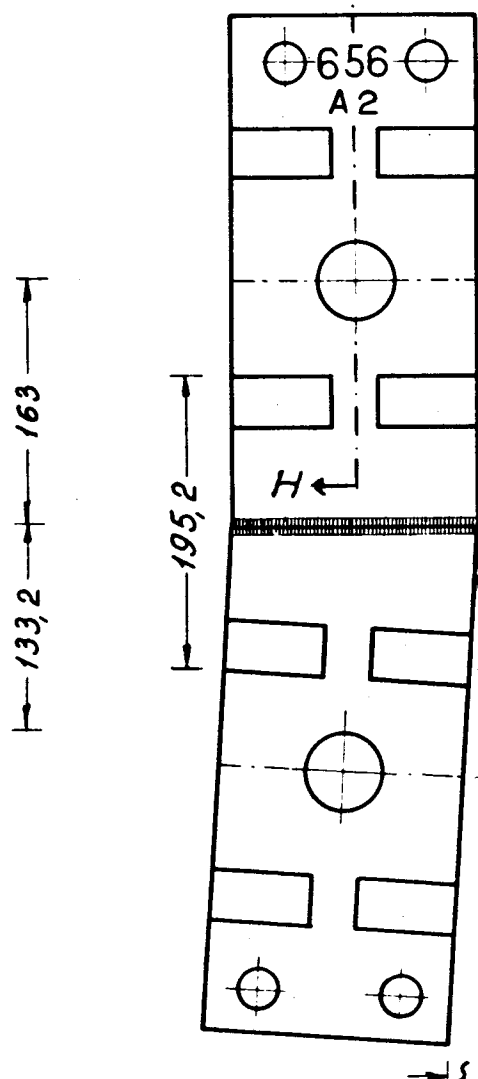
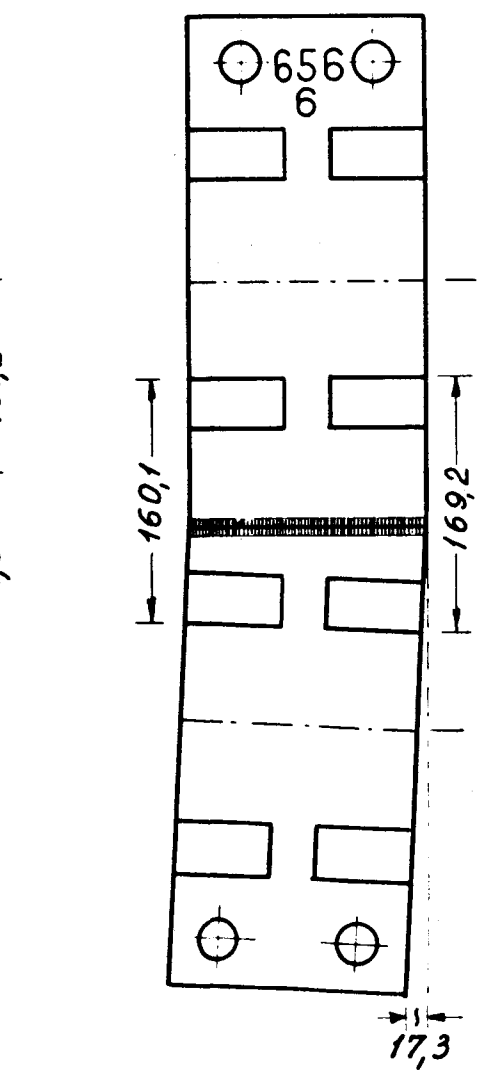
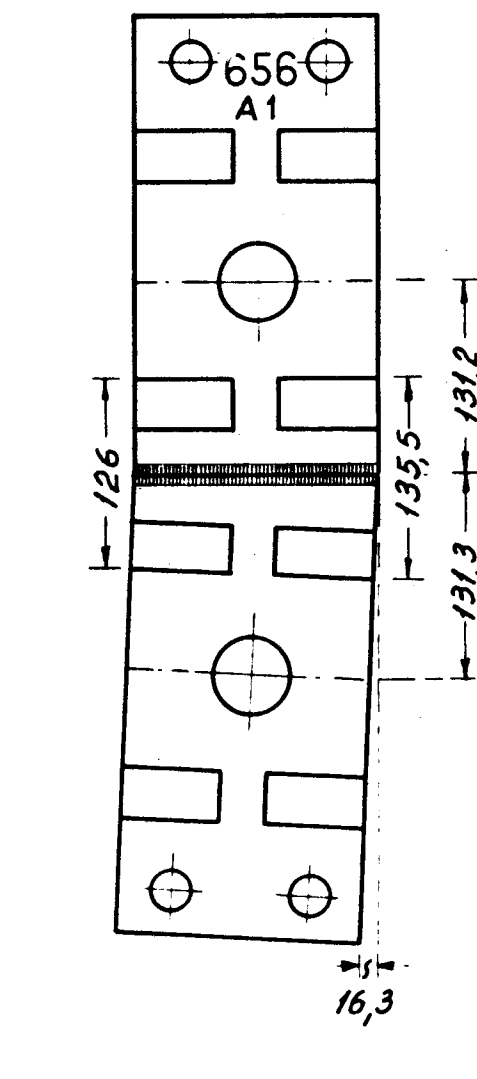
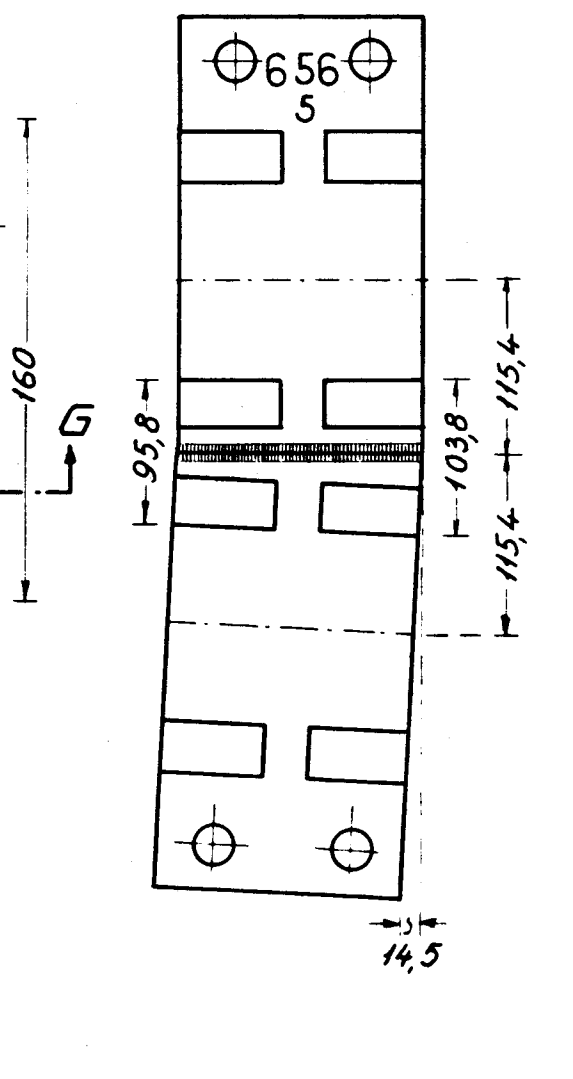
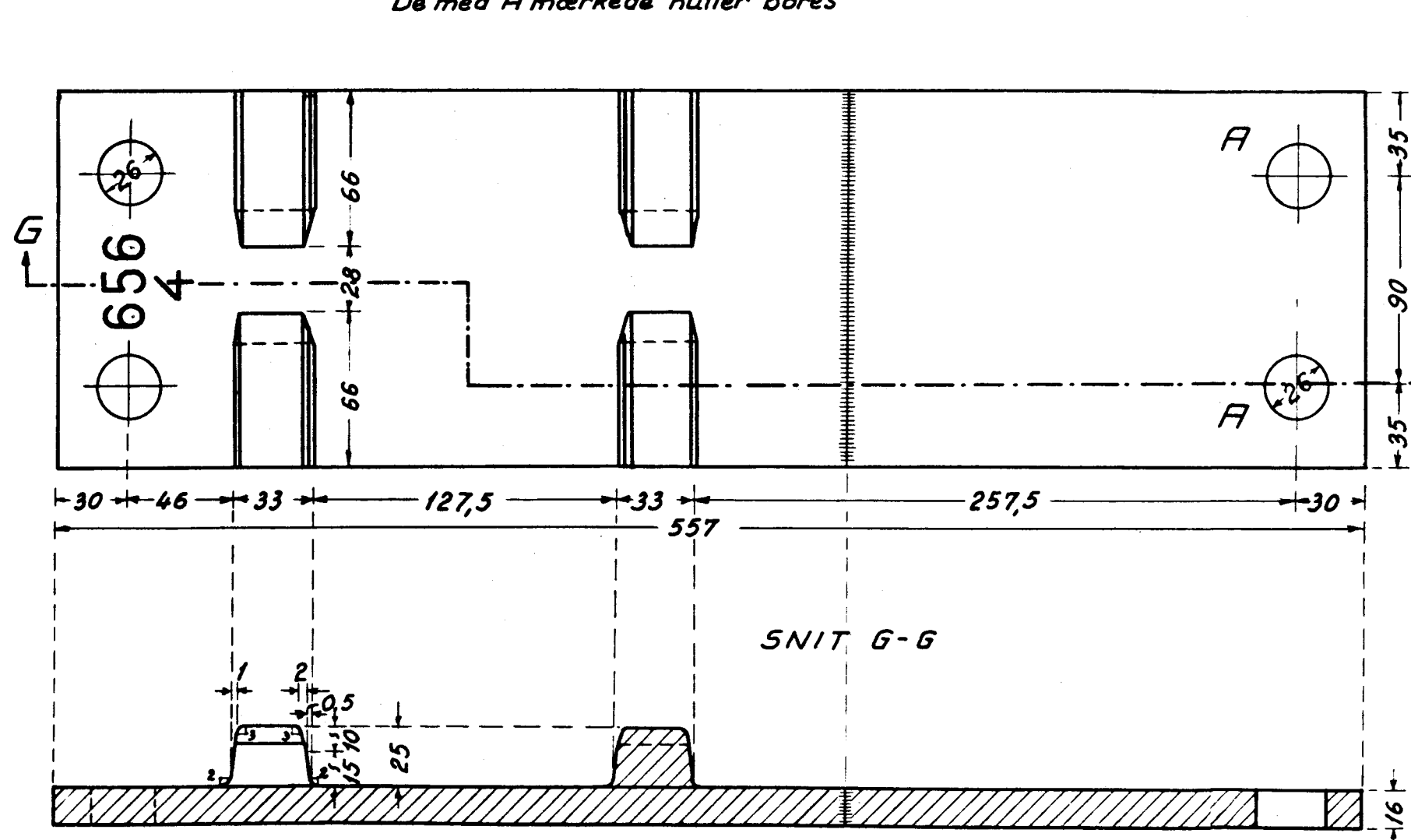
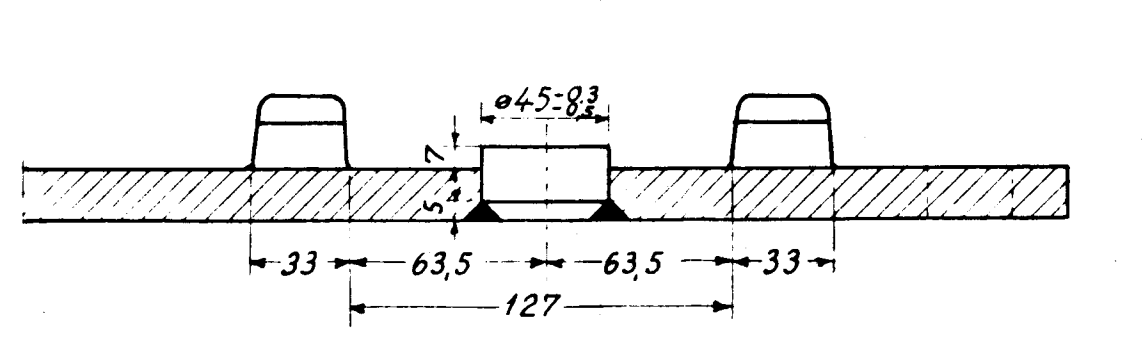


SAMMENSVEJSEDE UNDERLAGSPLADER Mf:1:5.

De med A mærkede huller bores



SNIT H-H, Mf:1:2,5.



VÆGTFORTEGNELSE		
pos. nr.	underlagsplad. nr.	kg pr. stk.
05. 656. 0050	656 - 5	14,2
05. 656. 1010	656 - A 1	14,6
05. 656. 0060	656 - 6	15,3
05. 656. 1020	656 - A 2	15,7
05. 656. 1030	656 - A 3	14,3
05. 656. 0070	656 - 7	15,0
05. 656. 1040	656 - A 4	15,4

VÆGTFORTEGNELSE		
pos. nr.	glidestol nr.	kg pr. stk.
05. 657. 0000	657	16,1
05. 658. 0000	658	24,3
05. 656. 0010	656 - 1	16,9
05. 656. 0020	656 - 2	11,7
05. 656. 0030	656 - 3	11,9
05. 656. 0040	656 - 4	12,3

*j) anvendes kun i krydsningssporskifte

Danske Statsbaner
Baneafdelingen Sporkantoret

Tungeparti V 1:9 h
med fjedrende skinnetunger
Glidestole og underlagsplader

Konstr. C.H. d²²/10 1957
Tegnet af *Ormyd, Clausen*
Kontr. M.S.S. **Blad 6505d**
Rev. A 1/2 64. b 7/8 c 9/10 d 4/6 65.

Målene er mm